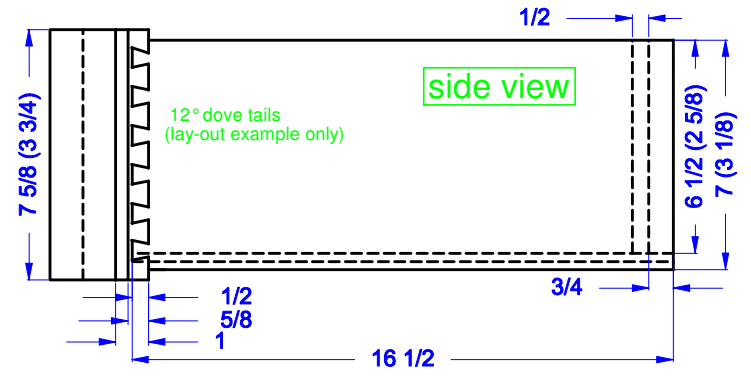
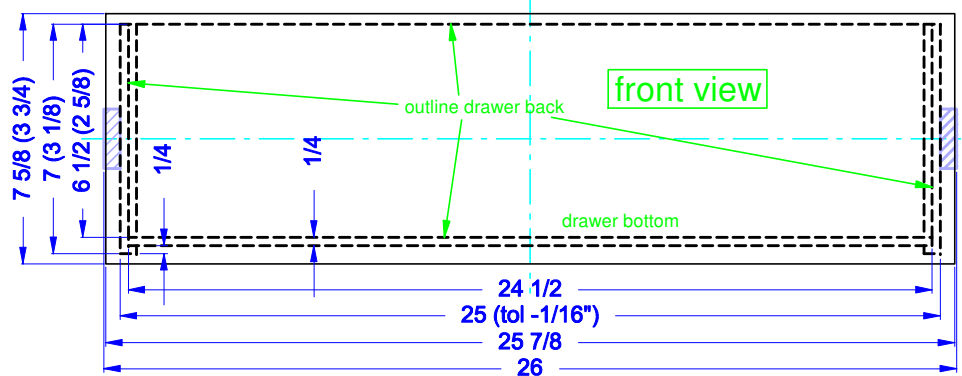


NOTE 1: The centre drawers of the dresser have straight fronts. Basically follow the dimensions of the right side of this drawer.

NOTE 2: The height dimensions for the two small drawers are put in parentheses.



<b>Nightstands &amp; Dresser Project</b> top/front/side view -- drawers	ref. : ND-TFSV-22
	rev. : 21-Jan-2008
Dempsey Woodworking -- just a hobby --	scale: varies
	unit : inch
	size : letter
Copyright (c) 2007-2008 Pieter A.C.A. van Vliet	